



<https://www.uni-luce.com>

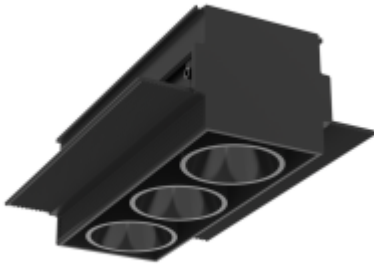
+39 339 505 5880

info@uni-luce.com





Via Monselice, 26, 20832 Desio

MB, Italy

LIRA-3 8 M IN TRIMLESS



Available colors:

-  20116-B8TR
-  20116-W8TR
-  20116-G8TR
-  20116-BG8TR

Beam angle:	40°
LED Color:	2700K 3000K 4000K 6000K
System Power:	8W
CRI:	90
Lumen output:	520lm
Material:	aluminium, PC
Location:	Interior
Fixation:	Celling
Installation:	Recessed
Product dimension:	134x97x48mm
Cut hole size:	50x136mm
Input:	220-240V 50/60HZ
IP:	54
Class:	III
DIM Option:	DALI TRIAC 1-10V





<https://www.uni-luce.com>

+39 339 505 5880

info@uni-luce.com

Via Monselice, 26, 20832 Desio

MB, Italy

LIRA COLLECTION is the new product, which brings the acclaimed 'The Invisible Black' effect to a linear system. A lighting technological feature that allows LIRA lamp to hide the origin of the light while bathing the scene and generates a spectacular effect: light in space, with no visible source. By hiding the origin of the light, LIRA manages to always keep the same look - turned on or off. With LIRA the lighting becomes minimalist and non-invasive, the luminary thus passes unnoticed and abdicates the focus of attention. Besides being an excellent luminary for the overall lighting function, LIRA is a perfect element for lighting support or highlighting certain interior design elements as desired. Meanwhile in overall lighting it stands out for its low glare and high visual comfort, in highlighting function it benefits from its perfect controlled light beam which maximizes the LED light flow. The LIRA technology reduces the glaring effect down to a very low level thanks to the high beam control, which concentrates the light rays so that they flow to the outside without hardly any deviations from the delimited angle. On the other hand, its anti-glare screen in 'technical black' finish absorbs the minimum losses and prevents the piece from shining or reflecting the light. LIRA collection comes into 2 options: S and M. Thanks to high IP rate LIRA can be used for both indoor and outdoor areas.